



AUDIO FOR VATSIM INFORMATION PACKET

October 13th, 2019

Purpose: Help ZAU controllers set-up, and familiarize themselves with the correct procedures of AFV, to operate efficiently when AFV is launched.

What is Audio for VATSIM?

Audio for vatsim is a revolutionary update to vatsim's very old voice codec. Members will notice a great improvement in voice quality, and additional effects for added realism.

How do I get ready?

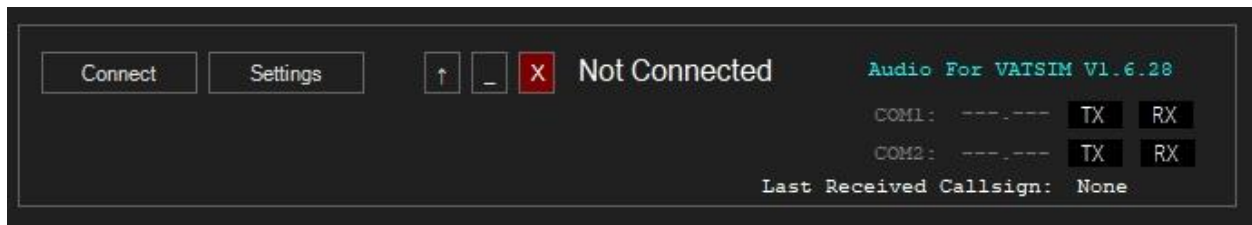
Go [here](#) to download the updated clients you will need. And follow the instructions provided on the webpage to help your ATC clients setup.

This document was prepared by Chris Hadden, Deputy Air Traffic Manager.

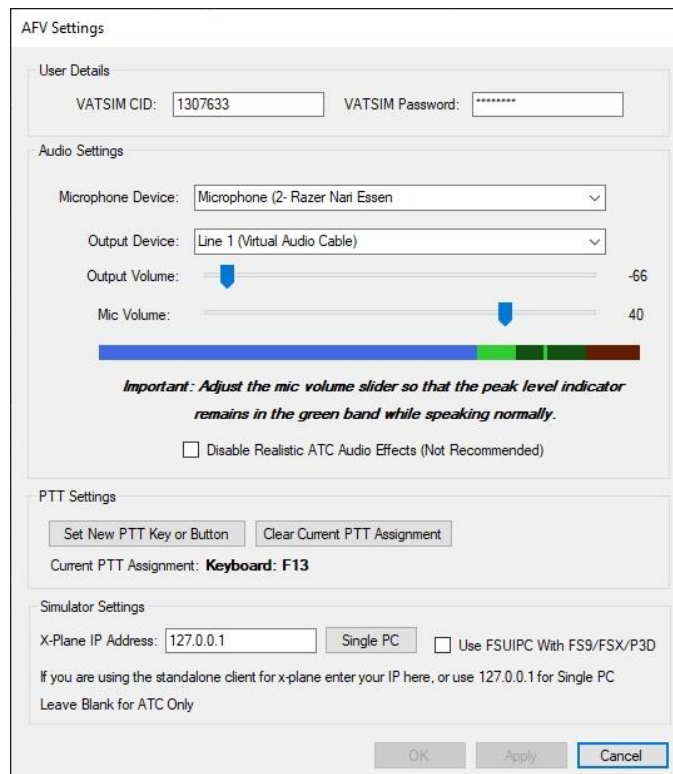
Setup Process

The first step once you have updated your clients is to ensure that you have downloaded the standalone client. This is essential to be able to work as an Air Traffic Controller, as AFV has not been completely implemented into our software yet.

Once you have the standalone client installed, begin setting up your audio by clicking the settings button at the top.



And configuring it to your microphone and headphones. Remember to test your mic to be in the green slider when speaking. And set a push to talk key.



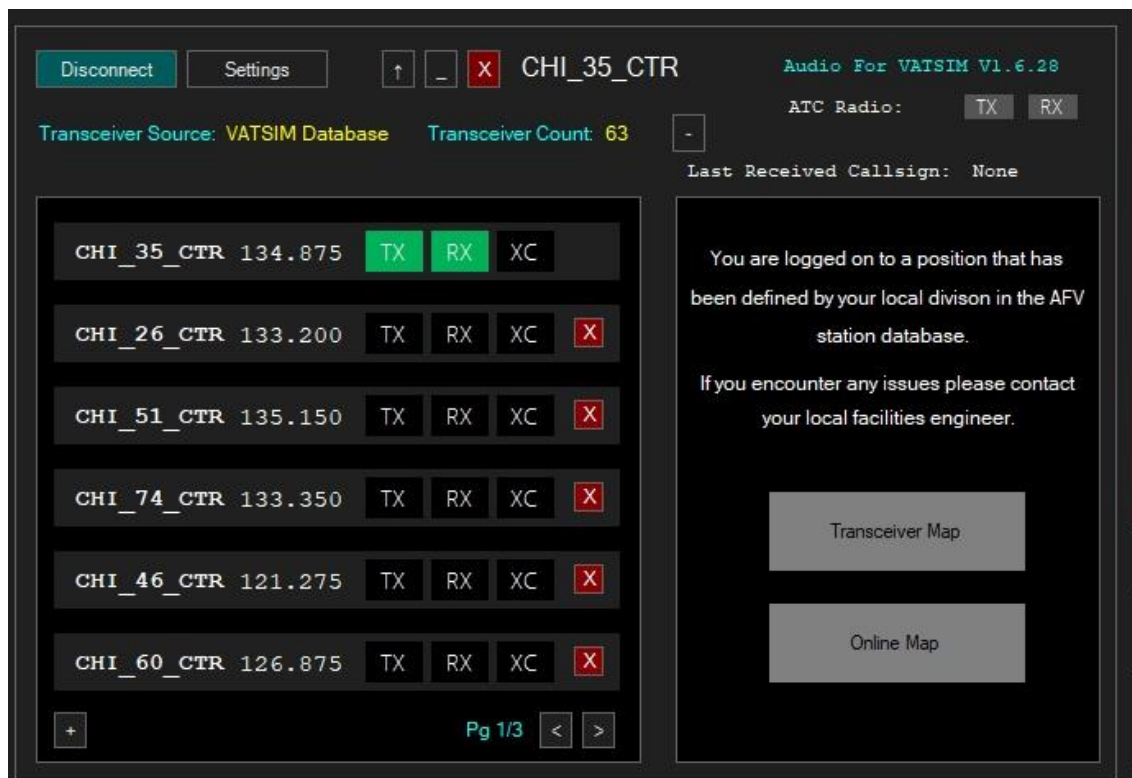
Connecting the ATC Client

Next, to connect, launch your preferred ATC client. (Make sure it is updated) Prime your frequency. **Do not select headset or speakers. Prime only.** Then connect to the network.



Connecting the Standalone Client

Once your ATC client is connected, click connect on the standalone audio client and it will show the callsign you are logged on at the top. And automatically setup your frequency to transmit (As well as transceivers) and receive voice.



VCCS Panel

Each position you log onto will have their own preset VCCS positions and frequencies available. The configuration is dependent on which position you are controlling. (CHI_Z_APP will have different positions then CHI_35_CTR etc.)

CHI_W_APP	133.625	<input type="checkbox"/> TX	<input type="checkbox"/> RX	<input type="checkbox"/> XC
CHI_F_APP	126.650	<input type="checkbox"/> TX	<input type="checkbox"/> RX	<input type="checkbox"/> XC
CHI_Y_APP	135.025	<input type="checkbox"/> TX	<input type="checkbox"/> RX	<input type="checkbox"/> XC
CHI_X_APP	135.075	<input type="checkbox"/> TX	<input type="checkbox"/> RX	<input type="checkbox"/> XC
CHI_J_APP	126.700	<input type="checkbox"/> TX	<input type="checkbox"/> RX	<input type="checkbox"/> XC
CHI_E_APP	118.925	<input type="checkbox"/> TX	<input type="checkbox"/> RX	<input type="checkbox"/> XC
CHI_B_DEP	125.000	<input type="checkbox"/> TX	<input type="checkbox"/> RX	<input type="checkbox"/> XC
CHI_D_DEP	134.400	<input type="checkbox"/> TX	<input type="checkbox"/> RX	<input type="checkbox"/> XC
CHI_G_DEP	135.275	<input type="checkbox"/> TX	<input type="checkbox"/> RX	<input type="checkbox"/> XC
CHI_M_DEP	126.625	<input type="checkbox"/> TX	<input type="checkbox"/> RX	<input type="checkbox"/> XC
CHI_N_DEP	118.275	<input type="checkbox"/> TX	<input type="checkbox"/> RX	<input type="checkbox"/> XC
CHI_K_DEP	125.400	<input type="checkbox"/> TX	<input type="checkbox"/> RX	<input type="checkbox"/> XC
CHI_S_APP	128.200	<input type="checkbox"/> TX	<input type="checkbox"/> RX	<input type="checkbox"/> XC

TX will allow you to transmit on the selected frequency, and add all the transceivers from that position into your control. RX will allow you to listen to the frequency, but not allow you to take over the transceivers and transmit on the frequency unless you have both TX and RX selected. XC (Cross Couple) is a special feature that is best explained in the [AFV Manual](#).

Multiple, preset positions are listed in the VCCS panel, however we ask that you only use one frequency until advised, to avoid confusion.

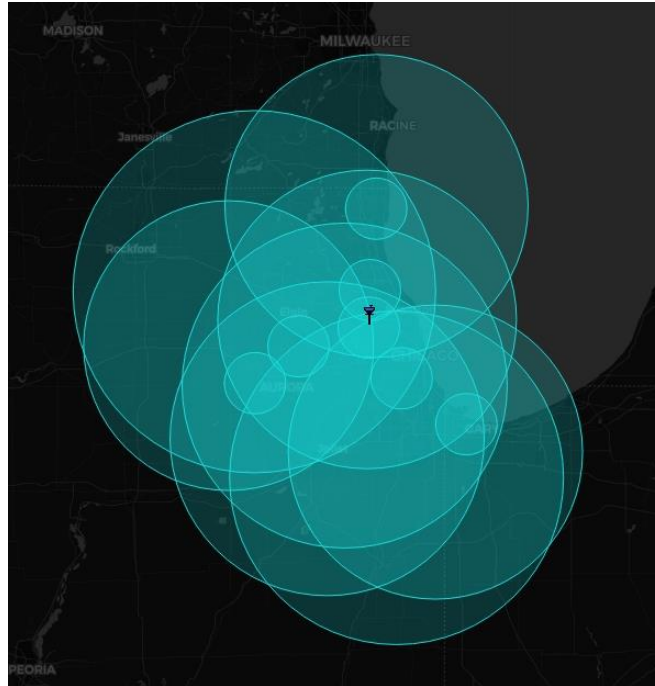
Transceivers

Each position has pre-defined transceivers that will be automatically applied to the position you log on with. For more information about them visit [here](#).

Chicago Center – 35

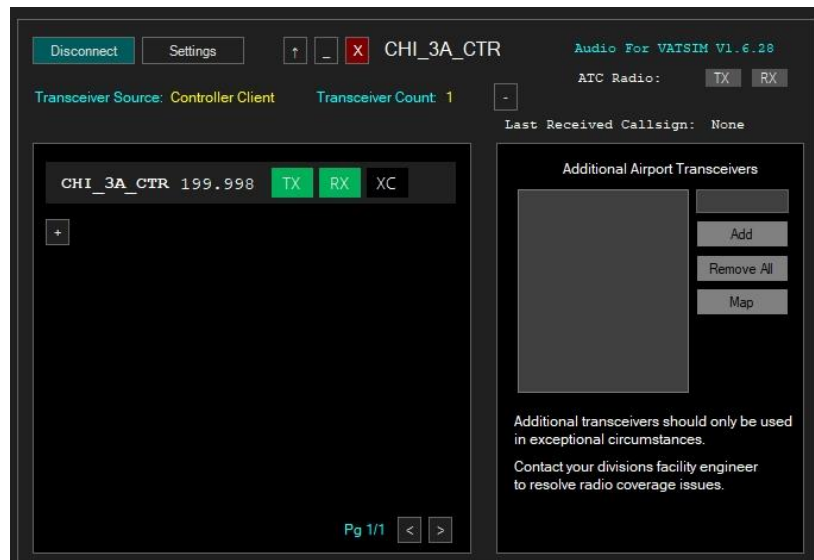


Chicago Approach – Z

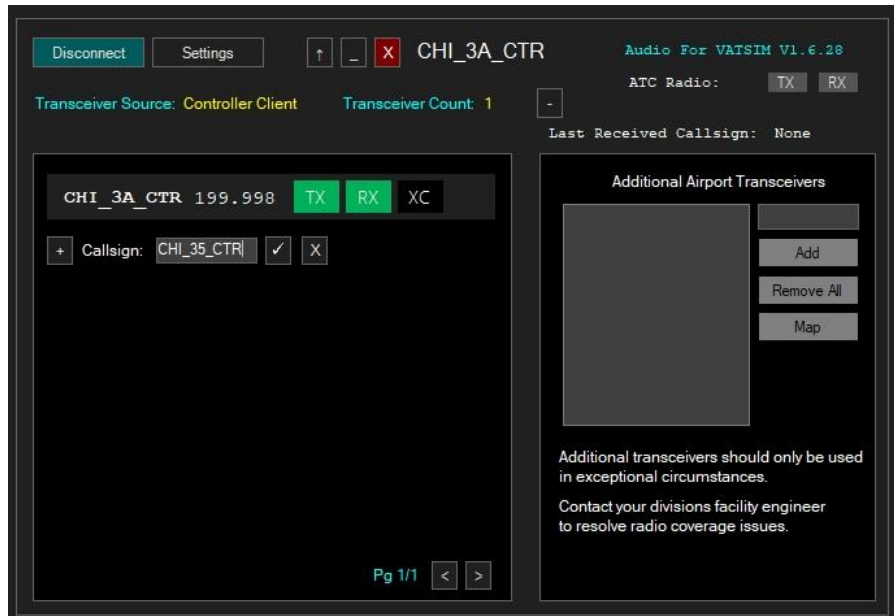


Relief

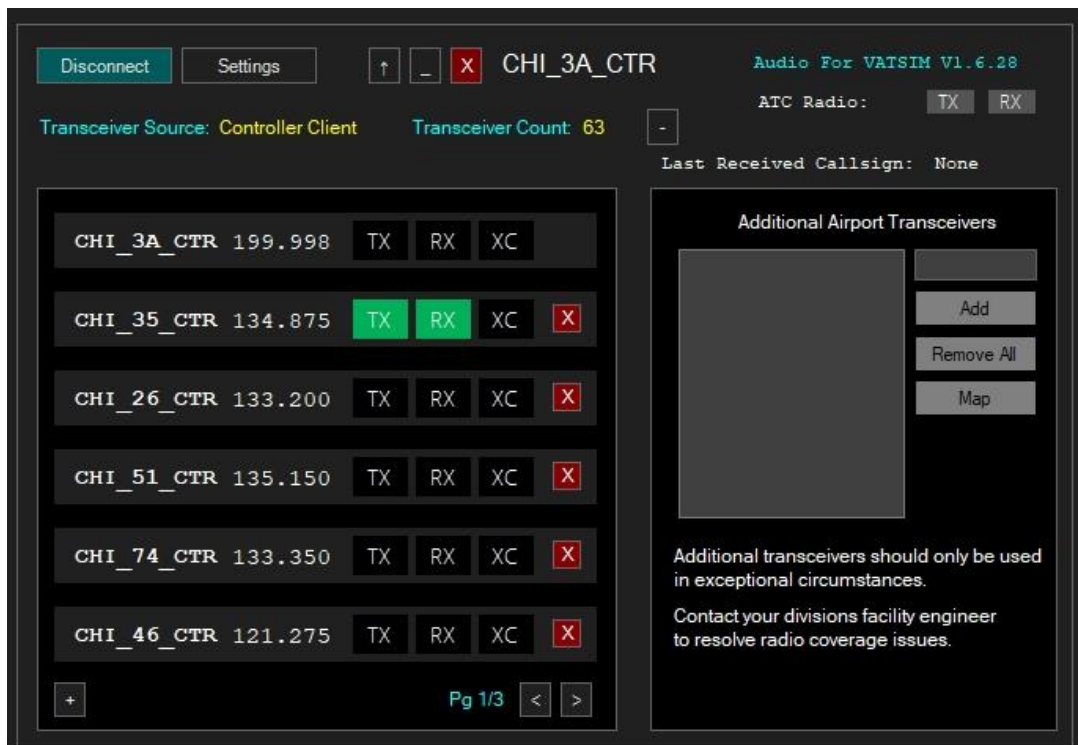
When providing relief for another controller, the process is simple. Follow the standard connect protocol, however, login with relief callsign.



Then click the “+” icon and add the position you are taking over and press enter.



Then click TX & RX to add the transceivers and listen to the frequency. That's it!



If you have any questions about the setup process, contact a facility staff member.

Enjoy!